

## Unit Wrap Up

# Notes

## VOCABULARY

**Autotrophs** – must make own food

**Heterotrophs** – must consume other organisms to survive

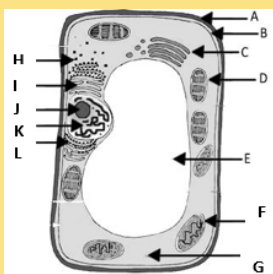
**NOTE:** plants and animals are multicellular eukaryotes

### Cells as Factories

Job in the Factory	Cell Organelle	Function of the Organelle
Shipping/Receiving Department		Regulates what enters/leaves the cell; has contact with the environment
Chief Executive Officer (CEO)		Controls cell activity; determines what proteins will be made
Factory Floor		Contains the organelles; site of most cell activity
Assembly Line		Where ribosomes do their work
Workers in the assembly line		Build the proteins
Finishing/packaging Department		Prepares proteins for use or export
Maintenance Crew		Responsible for breaking down and absorbing materials taken in by the cell
Support Beams (walls, ceilings)		Maintains shape of the cell (plant cells)
Power Plant		Transforms one form of energy into another
Cafeteria		Makes food for the cell (plant cells)

### Plant Cell

Autotrophs – Plants do not move – Cell Walls & Chloroplasts – One large vacuole – Shape: rectangular

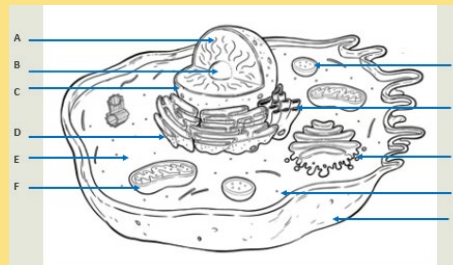


### Plant Cell Labels

- A –
- B –
- C –
- D –
- E –
- F –
- G –
- H –
- I –
- J –
- K –
- L –

### Animal Cell

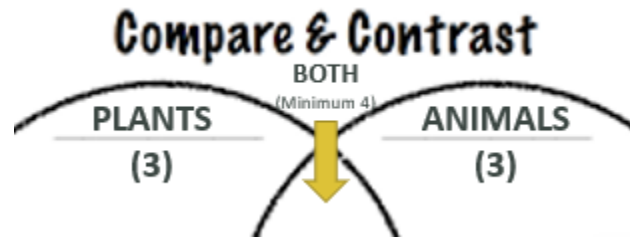
Heterotrophs – Animals move – Small Vacuoles – Shape: round, irregular



### Animal Cell Labels

- A –
- B –
- C –
- D –
- E –
- F –
- G –
- H –
- I –
- J –
- K –

## Plant vs Animal Cell Venn Diagram



### Plant Cells

Enter PLANT ONLY  
answers here

- 1.
- 2.
- 3.

### BOTH Plant & Animal Cells

Enter BOTH Plant &  
Animal answers here

- 1.
- 2.
- 3.
- 4.

### Animal Cells

Enter ANIMAL ONLY  
answers here

- 1.
- 2.
- 3.