

Virtual Lab: Population Biology Lab Assignment

This Virtual Lab has TWO PARTS:

1. Experimental Design Notes
2. Virtual Lab Google Form
3. Analysis Question

Part 1: Open the Experimental Design Notes

Part 2: Before attempting the Analysis Question:

Complete the VL: Population Biology Lab Google Form:

https://docs.google.com/forms/d/e/1FAIpQLSfUQ9uOeYldecn7RAJKxGRSB-UsYPTJ_vnOpElHRvy909TKgQ/viewform?usp=sf_link

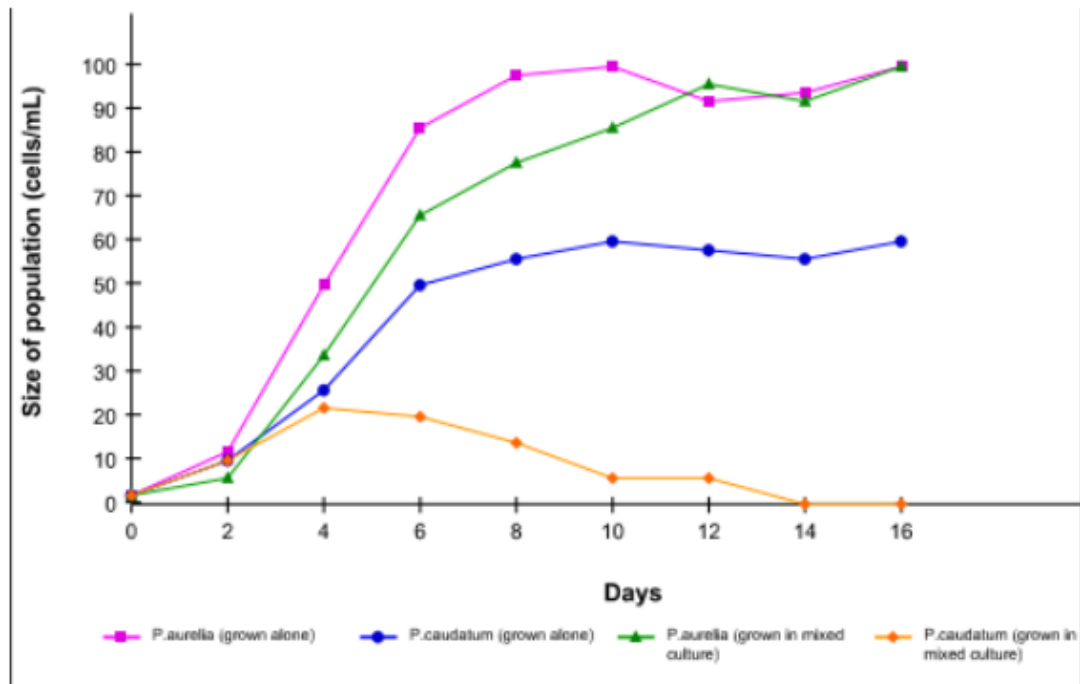
DO NOT attempt the Analysis Question without doing the Virtual Lab!

DO NOT copy from the Internet

USE Good Writing Strategies!

Part 2: Analysis Question

Population Biology: Data in Graph Form



REMEMBER, the Green and Orange lines are the two species grown in the same test tube.

Explain how this experiment demonstrates that two similar species cannot occupy the same space (competition). Discuss what happened to the populations when living alone compared to living together.

- Scroll down to the text submission box.
- TYPE your answer in the space provided.
 - *Proof your work for:* capitalization, punctuation, and complete sentences.
 - ONLY ONE submission is allowed!
- CLICK Submit